



Art Quarry
Educational Resources

Level 4
Graphic Design

How these materials may be used...

Purchasing *Art Quarry* items grants you the permission to be inspired by any of the material included therein. Photocopies of pages to release as handouts is permitted. However, if photocopies are made, the credits located in the lower right of each page must remain visible when copied. It is not permitted to recreate these handouts in their entirety without the credits included in the document. It is unlawful to use any of the documents included without proper consideration for the creator of the material.

All care has been taken to give credit to the student work included in this document. The student examples are copyrighted materials and may not be duplicated. These examples simply represent the directions that are possible for a specific assignment. Any duplication of these works without prior consent is a violation of copyright and/or proprietary rights.

Material Written & Designed By: Matthew Johnson / ArtQuarry.com

Only Available in Digital Format

All Material © 2015 Art Quarry

All Rights Reserved.

INFORMATION GRAPHICS

For this assignment you will be working to visually interpret written statistical information. Called Information, or Explanation, Graphics it is one of the core practices for a graphic designer. Basically, it is the art of relaying collected information by way of simple, clear, and understandable visual presentation.

Create a chart/graph based on information that you research and collect. From your research, find a statistic that says the most about the chosen study (most shocking, disturbing, entertaining etc.). Keep in mind that this is part one of a larger assignment so choose a topic that allows for more versatility and a larger scope. Find multiple sources that corroborate the same information on your subject.

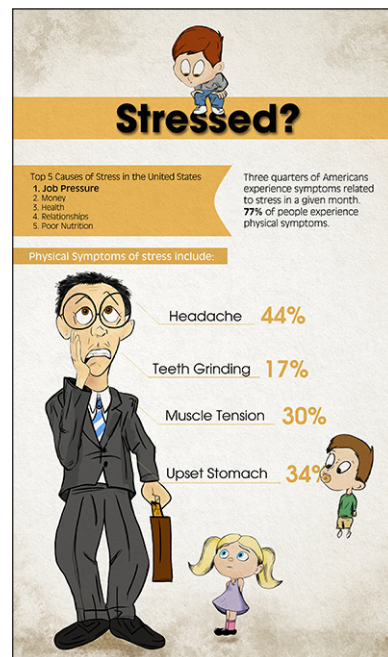
You must create your chart/graph without the use of photographs. Concept is key to success with this assignment. This means that you must think outside of typical bars, lines and pie charts. The visual elements must complement the information. For example: If I were to do a graph on the building of high-rise condos on the beach, I may choose to substitute the arrows and bars for condos or hotels.

Possible Directions

ADHD in children
 Poverty levels
 Education vs. Experience
 Public School test scores
 Diabetes related to age



© 2013 S. Hall



© 2013 G. Aragon